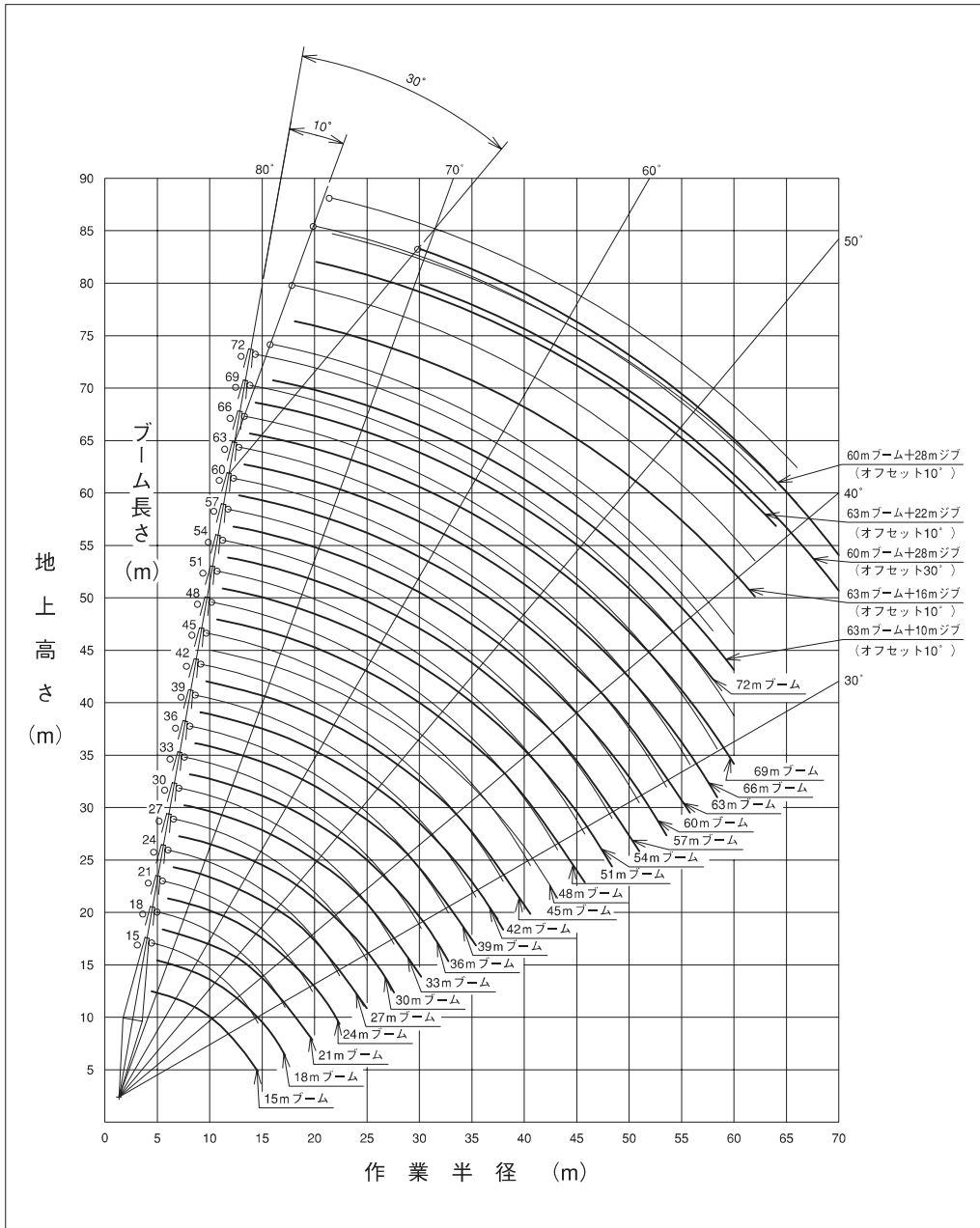
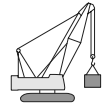


作業範囲図



定格総荷重表

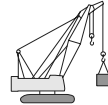
45tカウンタウェイト仕様



単位: t

■主ブーム

作業半径 (m)	ブーム長さ (m)																				
	15	18	21	24	27	30	33	36	39	42	45	48	51	54	57	60	63	66	69	72	
4.5	120.0																				
5.0	118.0	110.0	99.0/5.5																		
6.0	99.2	99.1	98.9	80.0/6.1	77.0/6.6																
7.0	85.5	85.4	85.2	85.3	77.0	66.0/7.1	66.0/7.6														
8.0	72.0	72.0	72.0	72.1	72.1	66.0	66.0	55.0/8.2	55.0/8.7												
9.0	60.1	60.0	60.0	60.1	60.1	60.1	60.0	55.0	55.0	44.0/9.2	44.0/9.7										
10.0	51.4	51.4	51.3	51.4	51.4	51.4	51.3	51.2	51.1	44.0	44.0	33.0/10.2	33.0/10.8	33.0/11.3	33.0/11.8						
12.0	39.8	39.7	39.6	39.7	39.6	39.6	39.5	39.4	39.3	39.1	39.0	39.0	39.0	39.0	33.0/12.4	32.0/12.9	32.0/13.4	32.0/13.9			
14.0	32.3	32.2	32.0	32.1	32.0	32.0	31.9	31.8	31.7	31.6	31.5	31.5	31.4	31.2	31.1	22.0	22.0	22.0	22.0	19.8/14.4	
16.0	30.8/14.5	26.9	26.8	26.8	26.7	26.7	26.6	26.5	26.4	26.3	26.1	26.1	26.0	25.8	25.7	22.0	22.0	22.0	20.5	18.3	
18.0		24.7/17.1	22.9	23.0	22.8	22.8	22.7	22.5	22.4	22.4	22.2	22.2	22.1	21.9	21.8	21.8	21.6	21.0	18.6	16.6	
20.0			20.3/19.7	20.0	19.8	19.8	19.6	19.5	19.4	19.4	19.2	19.2	19.0	18.9	18.7	18.7	18.6	18.4	17.1	15.1	
22.0				17.6	17.5	17.4	17.3	17.2	17.0	17.0	16.8	16.8	16.6	16.5	16.3	16.3	16.1	16.0	15.8	14.0	
24.0				17.3/22.3	15.6	15.5	15.4	15.2	15.1	15.0	14.9	14.8	14.7	14.5	14.4	14.3	14.2	14.0	13.9	12.8	
26.0					14.8/24.9	13.9	13.8	13.6	13.5	13.4	13.2	13.2	13.1	12.9	12.7	12.7	12.5	12.4	12.3	12.0	
28.0						12.9/27.5	12.4	12.3	12.2	12.1	11.9	11.8	11.7	11.5	11.4	11.4	11.2	11.0	10.9	10.7	
30.0							11.3	11.2	11.0	10.9	10.7	10.7	10.6	10.4	10.2	10.2	10.0	9.9	9.7	9.6	
32.0							11.3/30.1	10.2	10.0	10.0	9.8	9.7	9.6	9.4	9.2	9.2	9.0	8.9	8.7	8.6	
34.0								9.9/32.7	9.2	9.1	8.9	8.8	8.7	8.5	8.4	8.3	8.1	8.0	7.8	7.7	
36.0									8.7/35.3	8.3	8.1	8.1	7.9	7.7	7.6	7.5	7.4	7.2	7.1	6.9	
38.0										7.7/37.9	7.5	7.4	7.3	7.1	6.9	6.9	6.7	6.5	6.4	6.2	
40.0											6.9	6.8	6.7	6.5	6.3	6.2	6.1	5.9	5.8	5.6	
42.0											6.8	6.7	6.5	6.3	6.1	5.9	5.8	5.7	5.5	5.2	
44.0												6.0	43.1	5.6	5.4	5.3	5.2	5.0	4.9	4.7	
46.0														5.3/45.7	5.0	4.9	4.8	4.6	4.4	4.2	
48.0															4.6	4.5	4.3	4.1	3.9	3.7	
50.0															4.6/48.3	4.0	3.9	3.7	3.5	3.3	
52.0																3.9/50.9	3.5	3.3	3.1	2.9	
54.0																	3.3/53.2	3.0	2.8	2.6	
56.0																		2.7/55.8	2.4	2.2	
58.0																			2.1	1.9	
60.0																			2.1/58.4	1.7	
61.0																				1.5	



単位: t

■ショートジブ

作業半径 (m)	ブーム長さ (m)																				
	15	18	21	24	27	30	33	36	39	42	45	48	51	54	57	60	63	66	69		
5.3	11.0	11.0/5.8																			
6.0	11.0	11.0	11.0/6.4	11.0/6.9																	
7.0	11.0	11.0	11.0	11.0	11.0/7.4	11.0/7.9															
8.0	11.0	11.0	11.0	11.0	11.0	11.0	11.0/8.4														
9.0	11.0	11.0	11.0	11.0	11.0	11.0	11.0	11.0/9.5													
10.0	11.0	11.0	11.0	11.0	11.0	11.0	11.0	11.0	11.0	11.0	11.0/10.5	11.0/11.0	11.0/11.6								
12.0	11.0	11.0	11.0	11.0	11.0	11.0	11.0	11.0	11.0	11.0	11.0	11.0/12.1	11.0/12.6	11.0/13.1	11.0/13.7						
14.0	11.0	11.0	11.0	11.0	11.0	11.0	11.0	11.0	11.0	11.0	11.0	11.0	11.0	11.0	11.0	11.0	11.0	11.0	11.0/14.2	11.0/14.7	
16.0	11.0/15.8	11.0	11.0	11.0	11.0	11.0	11.0	11.0	11.0	11.0	11.0	11.0	11.0	11.0	11.0	11.0	11.0	11.0	11.0	11.0	
18.0		11.0	11.0	11.0	11.0	11.0	11.0	11.0	11.0	11.0	11.0	11.0	11.0	11.0	11.0	11.0	11.0	11.0	11.0	11.0	
20.0		11.0/18.4	11.0	11.0	11.0	11.0	11.0	11.0	11.0	11.0	11.0	11.0	11.0	11.0	11.0	11.0	11.0	11.0	11.0	11.0	
22.0			11.0/21.0	11.0	11.0	11.0	11.0	11.0	11.0	11.0	11.0	11.0	11.0	11.0	11.0	11.0	11.0	11.0	11.0	11.0	
24.0				11.0/23.6	11.0	11.0	11.0	11.0	11.0	11.0	11.0	11.0	11.0	11.0	11.0	11.0	11.0	11.0	11.0	11.0	
26.0					11.0	11.0	11.0	11.0	11.0	11.0	11.0	11.0	11.0	11.0	11.0	11.0	11.0	11.0	11.0	11.0	
28.0					11.0/26.2	11.0	11.0	11.0	11.0	11.0	11.0	11.0	11.0	11.0	11.0	11.0	11.0	11.0	10.9	10.8	10.6
30.0						11.0/28.8	11.0	10.9	10.8	10.7	10.4	10.4	10.3	10.1	9.9	9.9	9.7	9.6	9.4		
32.0							10.4/31.4	9.9	9.8	9.7	9.4	9.4	9.3	9.1	8.9	8.9	8.7	8.6	8.4		
34.0								8.9	8.8	8.6	8.4	8.2	8.1	8.0	7.8	7.7	7.5				
36.0									8.2	8.1	7.9	7.8	7.6	7.4	7.3	7.2	7.1	6.9	6.8		
38.0										8.0/36.6	7.4	7.2	7.1	7.0	6.8	6.6	6.6	6.4	6.2	6.1	
40.0											7.1/39.2	6.6	6.5	6.4	6.2	6.0	5.9	5.8	5.6	5.5	
42.0												6.1/41.8	6.0	5.8	5.6	5.5	5.4	5.2	5.0	4.8	
44.0													5.5	5.3	5.1	5.0	4.9	4.7	4.5	4.3	
46.0													5.4/44.4	4.9	4.7	4.5	4.4	4.2	4.0	3.8	
48.0														4.7/47.0	4.3	4.1	3.9	3.7	3.5	3.3	
50.0															3.9/49.6	3.6	3.5	3.3	3.1	2.9	
52.0																3.3	3.2	2.9	2.7	2.5	
54.0																3.2/52.2	2.8	2.6	2.4	2.1	
56.0																	2.7/54.8	2.2	2.0	1.8	
58.0																		2.0/57.4	1.7		

注) 1. 上表に示す定格総荷重は、水平堅土上の定置荷役における値で、転倒荷重の78%以内および移動式クレーン構造規格で定める前方安定度1.15以上です。
 2. 実際につり上げられる荷重は、上表の定格総荷重からフックなどのつり具一切の質量を差し引いた値です。
 3. □(ハッチング)内の値は強度に基づいています。
 4. 作業半径とは、荷をつった状態での旋回中心からつり荷の重心までの水平距離です。
 5. カウンタウェイトは、標準仕様(45t)です。
 6. 表中の○/○は、定格総荷重/作業半径 m を示します。